

Build for Tomorrow. Today.

© 2010 Legrand. All Rights Reserved. LG16210610

designed to be better.

Cablofil  
On-Q  
Ortronics  
Pass & Seymour  
Vantage  
WattStopper  
Wiremold



**Legrand, North America**

60 Woodlawn Street  
West Hartford, CT 06110  
Phone: 1.877.BY.LEGRAND (295.3472)  
Fax: 1.860.232.2062  
[www.legrand.us](http://www.legrand.us)

570 Applewood Crescent  
Vaughan ON L4K 4B4  
Phone: 905.738.9195  
Fax: 905.738.9721  
[www.legrand.ca](http://www.legrand.ca)

designed to be better.



Connectivity,  
energy, efficiency,  
flexibility – all  
under one roof,  
by design

When he's ready to work,  
will your building be ready  
to work for him?

It will, if you build for  
tomorrow, today.

Welcome to the Next Generation Commercial Building as realized by Legrand. This is where connectivity, energy efficiency, flexibility and infrastructure all come together under one roof, by design. It's where all of your building applications come together onto one network.

As the leading provider of products and systems for electrical installations and information networks worldwide, Legrand delivers an unequalled depth and breadth of innovative solutions, all designed to work together to meet the evolving needs of today's workspaces.

From data centers to commercial offices, work spaces to conference rooms as well as training/education centers, you can rely on Legrand to deliver a building that's more competitive – with reduced ownership costs.

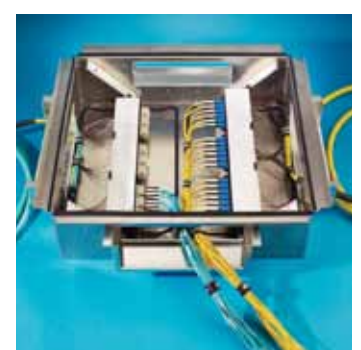
#### Depend on Legrand to provide:

- **Better productivity** – Innovative solutions save time and money in planning and installation.
- **Better connectivity** – the smart technology to bring voice, video, data and power wherever you need it.
- **Better flexibility and versatility** – high-performance electrical, data and A/V solutions that easily accommodate moves, adds and changes and open-space designs.
- **Better energy savings and sustainability** – superior energy efficiency helps contribute to LEED certification and support green building practices.

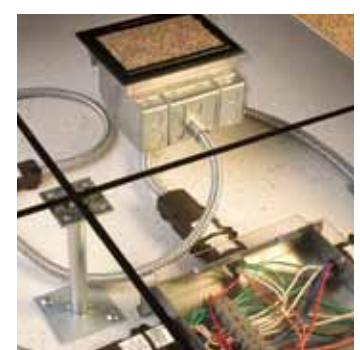
## Connecting to the future more efficiently.

Building a better working environment goes beyond just setting a standard for your network's performance. It's about bringing everything your network offers to your workstations easily and efficiently. With Legrand's end-to-end solutions, you'll always be ready to address tomorrow's challenges. This includes increasing bandwidth and performance requirements, new technologies and the need to move, add or change your configurations quickly and easily.

Only Legrand combines network solutions with maximum flexibility



**Zone Distribution**  
Reduce on-site installation times and reconfiguration costs, while maximizing performance and flexibility with field-installable or pre-terminated solutions.



**Modular Wiring Systems**  
Walkerflex® modular wiring systems install faster and easier than traditional pipe and box. Unique "plug-n-play" feature is designed to interface with a wide range of power applications.



**Physical Infrastructure Solutions**  
Layer Zero™ solutions maximize network efficiency, reduce the risk of equipment failure and enhance overall system performance.



**Modular Connectivity**  
Select from a complete range of high-performance workstation jacks, faceplates, surface mount boxes and furniture bezels to suit any workstation requirements.



**Consolidation Point**  
Bring voice, data and power closer to the workstation while blending with commercial interiors. For advanced cable management with security and flexibility.



**Surge Protection**  
Protect sensitive equipment from frequent spikes or surges and protect load balances from over-currents.



## Energy Efficiency

Legrand products can contribute up to 12 points towards LEED certification



### Working today, supporting tomorrow.

From the way we conduct our business to the solutions we create, preserving the environment is an ongoing concern at Legrand. That's why we're committed to creating energy management solutions that allow you to work more efficiently. Legrand operations follow lean manufacturing best practices, and every product and system we make is designed to provide superior energy and cost savings today and well into the future.



**Energy Management**  
Conviva-enabled Wiremold® Systems help you meet aggressive energy management objectives by seamlessly integrating the control and metering of lighting, plug-loads and HVAC.



**Commercial Lighting Controls**  
From sensors that automatically save energy to timers that manage it efficiently, Pass & Seymour® and WattStopper® lighting controls offer a variety of commercial solutions that are both stylish and green.



**Open Space Environments**  
Increase natural daylight and promote sustainable design in open space environments using Wiremold vertical column solutions. They can be configured to match office interiors and bring power and data wherever you need it.



**Raised Floor Solutions**  
Raised floors for energy efficiency enable a flexible work environment. Modular wiring, access floor boxes and wire mesh cable trays make for effortless reconfigurations.



Legrand is a United States Green Building Council (USGBC) member and is committed to helping buildings become energy efficient.

## Maximizing efficiency at the speed of tomorrow.

Mission-critical data centers and storage area networks (SANs) require reliable, flexible, scalable infrastructures with guaranteed performance. That's why we have introduced Layer Zero as the new foundation for the OSI networking model. Layer Zero – the infrastructure layer – addresses the critical role that the physical infrastructure, including racks, cabinets, advanced cable management and pathway solutions play in network performance.

Layer Zero solutions can have a significant impact on your network and bottom line by managing airflow and reducing power consumption and cooling costs as well as the risk of equipment failure, while improving overall system performance.



**Power Distribution**  
Wiremold Power Commander® PDUs offer comprehensive power distribution for IT environments. They offer remote current and temperature monitoring of connected equipment and individual outlet control for power recycling.



**Overhead and Raised Floor Pathways**  
Adaptable and scalable Cablofil wire mesh cable trays manage low voltage telecommunication and fiber optic cabling overhead and under the floor.



**Copper**  
The Clarity SNAP™ pre-terminated copper cabling system combines enhanced performance with a modular design for quick and easy installations that guarantee reliable performance.



**Fiber**  
Ideal for high-density environments, Ortronics® fiber solutions offer faster installation, higher performance and easier administration.



**Zone Distribution**  
Intermediate or remote consolidation points can be tested and secured prior to adding drops for voice and data outlets. Consolidation points or zone enclosures reduce costs associated with adds, moves and changes.



**Wiring Devices**  
Pass & Seymour plugs, connectors and receptacles are specially designed for higher amp cooling equipment. Quick thread assembly screws and cord-grip screws install three times faster.

Only Legrand offers end-to-end solutions to reduce power and cooling costs



Integrated systems reduce the cost of ownership



## Adapting to changing times, in no time.

Building for tomorrow is about two things – flexibility and accessibility. At Legrand, we design and implement more ways to prepare for what's ahead while reducing building ownership cost more than anyone else. Making us the one company that's changing the way building infrastructures will be managed today and tomorrow.



### Raised Floor

Raised floor components, including Wiremold floor boxes and Cablofil wire mesh cable trays, provide flexible solutions for your wire and cable management while accommodating changing environments.



### Work Surface Portals

Enhance the productivity of any meeting by providing tabletop access to power and multimedia A/V services, including data, video and audio.



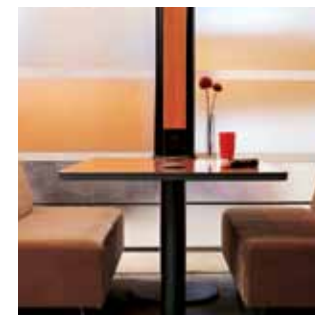
### Open Space Connections

Poke-thru devices and floor boxes combine high capacity capability with flexibility to make moving, adding and changing power and data configurations more efficient.



### Overhead Pathways

Cablofil wire mesh systems are infinitely configurable to adjust to the constraints of any environment.



### Vertical Solutions

Architectural columns provide attractive high-capacity wire and cable feeds while preserving open space environments. Vista™ columns promote sustainable design and daylighting, while helping to define internal spaces.



### Infloor Systems

Cost-effective and flexible Wiremold solutions support any floor plan today and tomorrow. Easily reconfigurable, eliminating costly renovations and rewiring.

## Legrand. Where network performance and pathways come together.

As the leading provider of products and systems for wire and cable management worldwide, Legrand delivers an unequaled depth and breadth of innovative solutions that are the backbone of the electrical and communications infrastructure. At work and at home.

By incorporating our passion for the principles of good design across all our divisions, we create products that make the lives of all we touch better. Legrand provides the right level of technology for the job, efficient installation, exceptional fit and finish, and outstanding customer service.

Embracing Legrand infrastructure solutions results in a building that is more competitive in its respective marketplace by providing higher value and lower life cycle cost to its owners and tenants.

**70** countries  
**30** brands  
**170,000** products  
More than **\$5.0**  
billion in global  
net sales in **2009**



designed to be better.



## At your service throughout North America.

With the inherent complexity of today's projects, having the right partner can be the key to success.

Drawing on our experience across all our brands, Legrand offers an unmatched range of innovative solutions – all of which are designed to work together seamlessly.

From concept to completion, our North American team is there to support you throughout every step of your project. From recommending the right infrastructure solution to providing easy access to the information you need for product selection to tech support, specialized training and more. Regardless of whether the project is commercial, industrial or residential, it's one more way we fulfill our promise to make the lives of all we touch better.

- > Design Assistance
- > Product Selection
- > Installation Support
- > Ongoing Optimization